

Stored
pressure

Powder

4 kg

Temperature ranges

-30°C + 60°C



BODY

STEEL

Deep drawn 2-pieces mild steel cylinder, wire feed welded. Externally painted with polyester resin

VALVE

ALUMINUM

Squeeze grip lever operated valve with aluminum body. The shock-proof pressure gauge provides an accurate indication of the pressure status of the extinguisher

HOSE

The EPDM reinforced rubber hose guarantees perfect flexibility and resistance within the temperature range. Complete with nozzle

EXTINGUISHING AGENT

ABC multi-purpose dry extinguishing powder, certified according to EN 615

PROPELLANT

The propellant gas is nitrogen. A small percentage of helium is added, to allow electronic leak detection

STANDARD PACK

Single piece cardboard box, robust and suitable for transport



WEIGHT
Kg

6,05

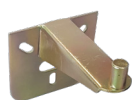
DIMENSION
mm

160 Ø x 400

Accessories

- Standard
- On request

BRACKET



- Button holed wall bracket



- Back hook wall bracket kit



- Transport bracket

HOSE RINGS & PROTECTIVE BASE



- Hose holder 160mm



- Protective base 160 mm

ADDITIONAL FEATURES



- One color screen printing



- Two-color PVC label



- Safety Valve HHZ

PACKAGING



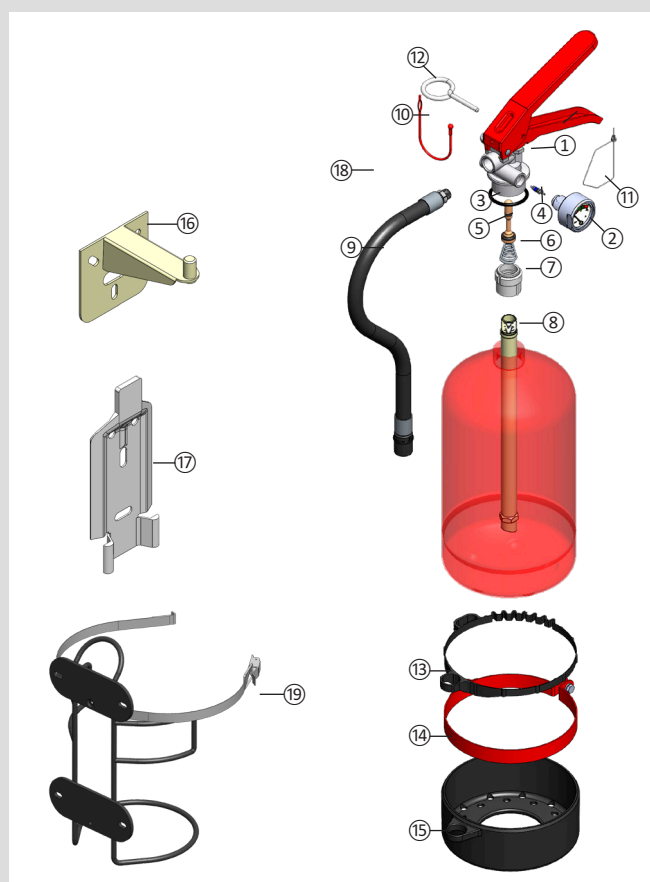
- One-piece havana cardboard box

Technical data

FIRE RATINGS	21A 144B C	ABC powder
CHARGE	4 kg \pm 2%	
CYLINDER	Manufacturing process	Deep drawing
	External painting	Polyester resin, minimum thickness 50 micron
	Corrosion resistance	480 h minimum according to ISO 9227:2017
EXTINGUISHING AGENT	ABC powder	ANAF - A32 ABC dry powder
PROPELLANT	Nitrogen or nitrogen + helium	
DISCHARGE	Discharge time	~ 17,7 s
PRESSURE	Operating pressure at 20 °C	13 bar
	Operating pressure at 60 °C	15 bar
	Operating pressure at -30 °C	11 bar
DIMENSIONS	Overall height	400 mm
	Bottle outer diameter	160 mm
WEIGHT	Empty / Charged	2,05 kg / 6,05 kg
PACKING SPECIFICATIONS	Standard packing	1 pieces cardboard box
	Carton size (B x L x H)	180 x 175 x 470 mm
	Weight per carton	6,32 kg
	Pallet	72 cartons
	Pallet size (B x L x H)	800 x 1200 x 1500 mm
	Pallet volume	1,44 m ³
	Weight per pallet (net/gross)	455 kg / 475 kg

© REPRODUCTION IS FORBIDDEN

32.895D.01.09.2021



Nr.	Description	Code
1	Complete valve without pressure gauge	00.886E.8100.01
2	Pressure gauge	00.245E.4951.10
3	O-ring for the valve	00.033E.1100.01
4	Schrader valve	00.886E.5100.00
5	Internal spindle with o-ring	00.241E.6100.00
6	Conical Spring	00.886E.5200.00
7	Dip tube holder	00.886E.5810.00
8	Dip tube	00.895D.5900.00
9	Assembled hose	00.850D.2400.05
10	Red lace holder for safety pin	00.886E.6290.00
11	Safety seal	00.005A.3220.00
12	Metal Safety pin	00.886E.5020.00
13	Hose holder Ø 160	00.241E.2800.00
14	Metallic support Ø 160	00.850E.2970.00
15	Plastic base Ø 160 with hose holder	00.850E.7100.01
16	Button holed wall bracket	00.005E.2900.00
17	Wall bracket	00.005E.2950.00
18	Transport Bracket	00.890D.2900.00

ANAFGROUP

Via del Commercio, 4 - Torre d'Isola (Pavia)
 Tel. 0382.4533 Fax. 0382.920279
 info@anaf.eu | www.anaf.eu